

Crawford County Office of Emergency Services

SUMMER NEWSLETTER – 2009

903 Diamond Park – Meadville, PA 16335

UPCOMING EVENTS

July

- 8th - VEMSACC MTG - Summit (Gibson Park)
- 20th – Crawford County Fireman's Assoc. - Vernon Central

August

- 19th – VEMSACC Mtg - Fairgrounds
- NO Mtg – Crawford County Fireman's Assoc.
- 22nd – 29th – Crawford County Fair

September

- 9th – VEMSACC Mtg – Centerville F D
- 21st – Crawford County Fireman's Assoc. – Springboro VFD

October

- 14th – VEMSAC Mtg – Vernon Central FD / CLAAS
- 19th – Crawford County Fireman's Assoc. – Greenwood VFD.

EMS Preference Dropped By Greg Beveridge

Effective July 01st, 911 operators will no longer be required to ask callers about EMS membership or preference. For years, policy required operators to determine if there was a membership or specific preference when handling EMS calls. This was done largely in portion to provide unbiased dispatch services to areas that had competing services. Once Emergycare ceased operations in the Meadville area, it did not appear that there were any municipalities that had services competing for calls.

Asking callers about membership or preference takes time. 911 operators are pushed to handle calls within 90 seconds from the time the call is received to the time a unit is dispatched; so removing a question that can at times be confusing to callers will reduce the time it takes to have an EMS unit dispatched. The 9-1-1 center recognizes that EMS agencies do have membership programs and had provided ample time since the Fall of 2008 for individual agencies to notify their members to specifically request a service if necessary. The 911 center staff will still honor callers requests in accordance with policy and procedure.

The 9-1-1 center continues to encourage EMS agencies to advise their members to dial 911 and request their subscribed service, especially if their members reside within another agencies primary response area.

Call-Taking Simulator

By Greg Beveridge

Spring, 2009 saw another innovative piece of equipment delivered to the 911 center. This time, the equipment will be used to assist in training new telecommunicators. The Crawford County 911 center purchased a Call-taking and dispatch simulator from the Professional Pride Corporation. The \$6,300.00 device will enhance the current training program for new employees.

The simulator provides realistic, scenario-based training in a controlled setting. The simulator has four phone lines, two radio channels, ALI and ANI display, alert tones, a CAD (Computer Aided Dispatch) simulator, and the ability to add various background noises along with digitally recording the training sessions for review purposes. There are two pre-loaded address databases along with an empty database that has been filled with random addresses from around Crawford county to enhance the reality of the training.

This device will help to transition a trainee from book work in Emergency Medical Dispatch to handling live calls for Emergency Medical Assistance. As of June, one trainee has completed training with the simulator handling over sixty different scenarios. The simulator was purchased primarily to assist with training for Emergency Medical Dispatch, but simulated Fire and Law Enforcement emergencies are also used to prepare employees for live call-taking.

Trainees can receive, process, and dispatch "actual" calls that are placed from a remote console by role players. Trainees are monitored by their training officer during the scenarios. In the future, the simulator may be used for continuing education for all telecommunicators. The simulator will help new operators develop consistency and confidence in interrogating callers while entering data and providing medical Pre-arrival instructions.



AVL – Automatic Vehicle Locator

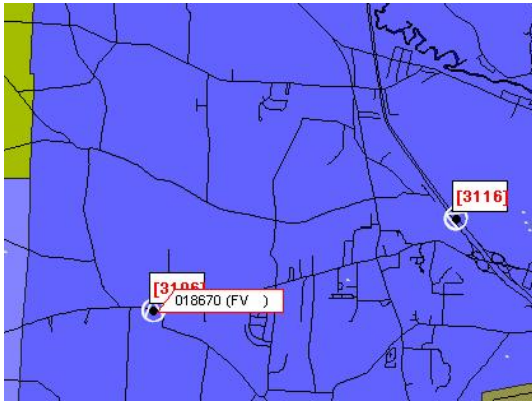
By Phillip Baranyai

EMMCO West has generously funded an AVL system for regional ambulances in Erie, Crawford, and Clarion counties. These counties have ambulances that participate on a specialized team for EMMCO West. In Crawford County, participating agencies include:

- Cambridge Volunteer Ambulance Service (CAVAS)
- Conneaut Lake Area Ambulance Service (CLAAS)
- Meadville Area Ambulance Service (MAAS)

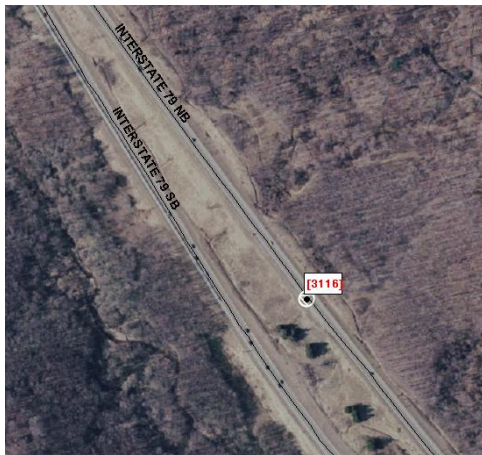
When an ambulance is traveling around the county, it sends updates of its location every 15 mins, when an ambulance is traveling in "priority mode" (lights and sirens) it sends updates of its location every 5 mins. These updates are transmitted over the existing UHF radio network. The radio signals are extracted and sent to EMMCO West for processing (along with all of the other counties units), then an aggregate signal is sent to each county.

This signal is injected into our existing Interact CAD system to visual show the locations of the ambulances on our CAD mapping, as seen below:



This depicts Conneaut Lake ambulance unit # 3106 on scene at a call on Conneaut Lake Rd in Vernon Twp and also unit # 3116 traveling

on Interstate 79 (see below for another example).



A close up of the above picture, Conneaut Lake ambulance unit # 3116 traveling north bound on Interstate 79 (as seen by the white direction arrow).

West Middlesex, Mercer County. In February 2009, emerald ash borer was identified in Granville, Mifflin County. In June 2009 the emerald ash borer was found in Allegheny Township, Westmoreland County. As a result, a state-imposed quarantine has been issued restricting the movement of all ash nursery stock, green lumber, and other ash material (including logs, branches, wood chips, and firewood).

Pennsylvania Department of Agriculture Counties Quarantined for Emerald Ash Borer March 02, 2009 includes Mercer, Lawrence, Butler, Beaver, and Allegheny Counties. Numerous purple sticky traps can be seen along the roadway throughout Crawford County.

Under authority of Section 21 of the Plant Pest Act (act of December 16, 1992, P. L. 1228, No. 162)(3 P. S. § 258/21) the Pennsylvania Department of Agriculture hereby orders the following: The movement of firewood of all types and species into the Commonwealth of Pennsylvania is prohibited. Firewood includes all wood, processed or unprocessed, coniferous or hardwood, meant for use in a campfire or other outdoor or indoor fire. This prohibition does not apply to the transportation of saw logs, pulpwood or wood chips to facilities for processing into lumber, paper or manufactured wood products. Examples of circumstances under which firewood from out-of-state is brought into this Commonwealth include instances where firewood is transported to public and private campgrounds by campers, or to sporting events and other events where travelers camp outdoors; or to activities such as Civil War reenactments where wood is used for cooking and evening campfires; or as bulk firewood sold by the truckload or some other volume of measure (cord, face cord, rick, etc...), or as firewood purchased for indoor residential use.

For more information go to:
<http://ento.psu.edu/extension/trees-shrubs/emerald-ash-borer>

Emerald Ash Borer

By Allen Clark

The emerald ash borer has killed more than 40 million ash trees in Michigan, Ohio, Indiana, Illinois, Maryland, Virginia, Pennsylvania, West Virginia, Missouri, Wisconsin and Kentucky. The first confirmed detection of emerald ash borer in Pennsylvania was in June 2007 in Cranberry Township in Butler County and Marshall Township in Allegheny County. In June 2008 emerald ash borer was found in



The green ash tree in a non-residential landscape where the first emerald ash borer was found in Butler County, Cranberry Township, Pennsylvania.



"A purple panel sticky trap in an ash tree that was hung by an Emerald Ash Borer Survey Team. These traps will be inspected for the presence of emerald ash borer adults in mid-summer and will be removed in mid- to late August."

Health, Pennsylvania Attorney General's Office, Meadville Medical Center (\$500 donation), Pennsylvania Department of Agriculture, Pennsylvania Department of Environmental Protection (grant for 50% of total expenses), Crawford County District Attorney's Office (\$250 donation from Drug Forfeiture Account), Crawford County Sheriff's Department, and the Crawford County Retired & Senior Volunteer Program.

The purpose of the event is to keep families, neighborhoods, and the environment safe by properly disposing of unwanted and outdated medicines. The United States Environmental Protection Agency (EPA) reports that pharmaceuticals have been increasingly detected at very low levels in U.S. drinking water. The flushing of drugs directly contributes to this problem. The medications received during the collection event will be safely disposed of and will not enter the drinking water system.

The following items will be accepted: Medicines in original containers, Epi-pens and Inhalers, Over-the-Counter Drugs, Controlled Substances, Animal Medications, and Medicated Creams and Shampoos.

The event is **FREE** for Crawford County residents. More information can be obtained by calling the Crawford County Solid Waste Authority at 814-333-7366.

Crawford County Amateur Radio Society – Field Day

By Jim Chion

The Crawford Amateur Radio Society participated in Field Day recently by setting up a temporary shelter and antennas and using emergency power at Roche Park in Vernon Township. Field Day is an event sponsored by the ARRL, a national amateur radio organization. The object of the event is to work as many other stations as possible and in so doing to learn to operate in abnormal situations in less than optimal conditions. A premium is placed on developing skills to meet the

Unwanted Medication Collection

By Don Bovard

The Crawford County Office of Emergency Services is cosponsoring an **Unwanted Medication Collection** on Saturday, September 19th, 2009 from 10:00 a.m. to 1:00 p.m. at the Crawford County Fairgrounds. Other event sponsors include the Crawford County Commissioners, Crawford County Solid Waste Authority, Pennsylvania Department of

challenges of emergency preparedness as well as to acquaint the general public with the capabilities of amateur radio

The group used the generator provided by anti-terrorism task funding. More than 25 members participated. A total of 1187 contacts with other stations were made in the 24 hour period. These included 47 states, including Hawaii and Alaska, all but 1 of the Canadian provinces and several European countries. The Field Day event takes place annually on the last Saturday and Sunday in June.



Stockpile (SNS) Program, hospitals and SNS planners are required to demonstrate and exercise their knowledge and ability to request SNS assets. PA DOH has developed a Hospital Request Procedure and Hospital Request Form for SNS Assets.

On Friday, June 26, 2009, the Pennsylvania Department of Health (PA DOH) initiated a statewide hospital notification/SNS asset request exercise to demonstrate the request process. As part of this exercise the hospitals in Titusville, Meadville and throughout the Commonwealth of PA were sent a PA HAN message from the PA DOH asking them to fax a request for SNS assets, using the Hospital Request Form for SNS Assets, to Crawford County Office of Emergency Services. In addition, the FRED system will also be utilized for notification and to allow resources to be identified. The County EMA's then process or forwarded the request for unmet needs to the State EOC, who will then forward to the PA DOH. This is the same procedure that any organization would use to request resources during emergencies or disasters. For the exercise Titusville Hospital requested 1000 N95 masks and 1000 tablets of Cipro Meadville Hospital requested 18,420 tablets of Cipro.

This exercise is another step in preparing for any type of medical emergency including the H1N1 virus that has affected Crawford County and across the world.

Hospital Request Procedure and Hospital Request Form for SNS Assets

By Allen Clark

As part of the US Centers for Disease Control and Prevention's (CDC) Strategic National
