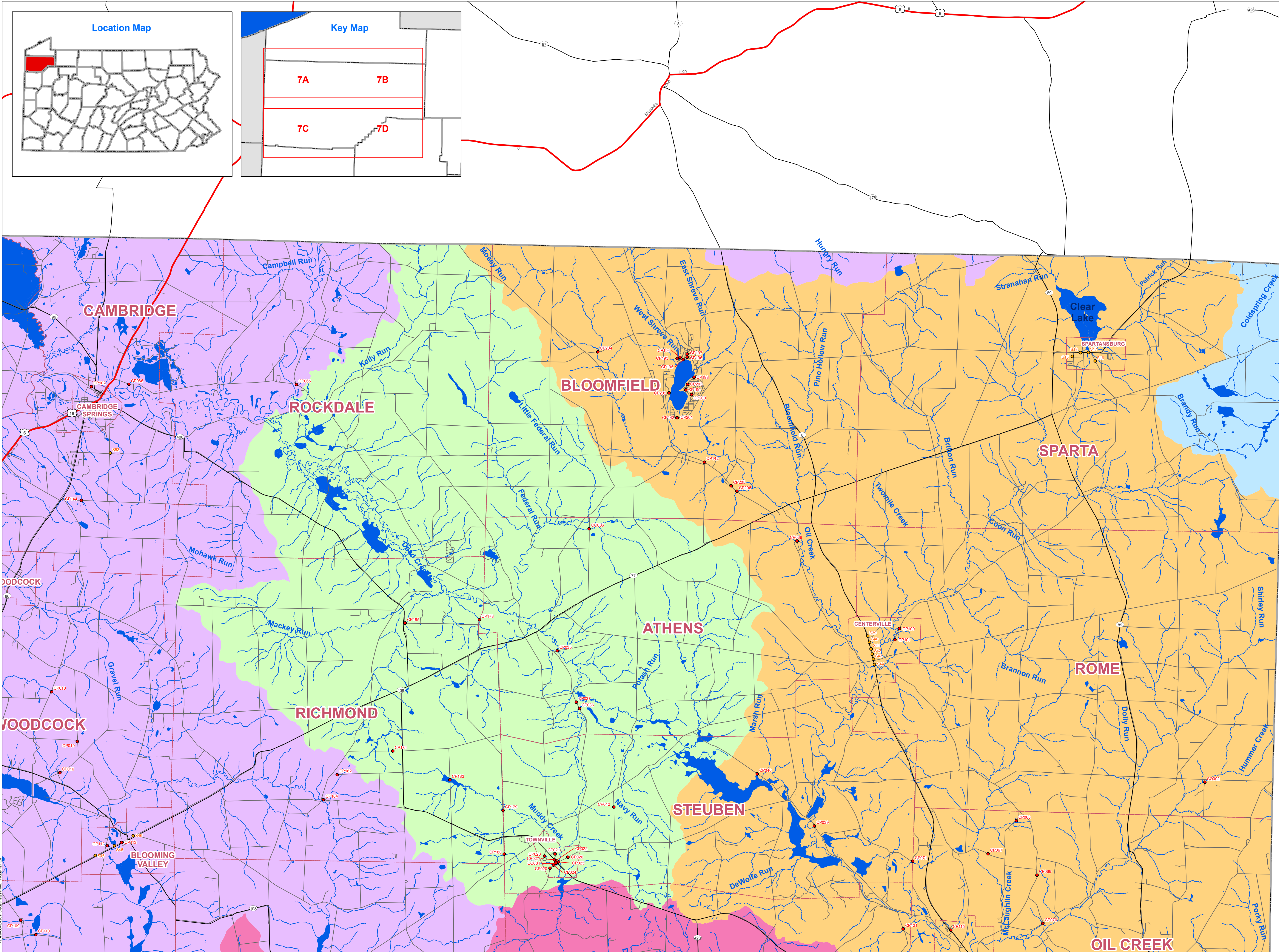
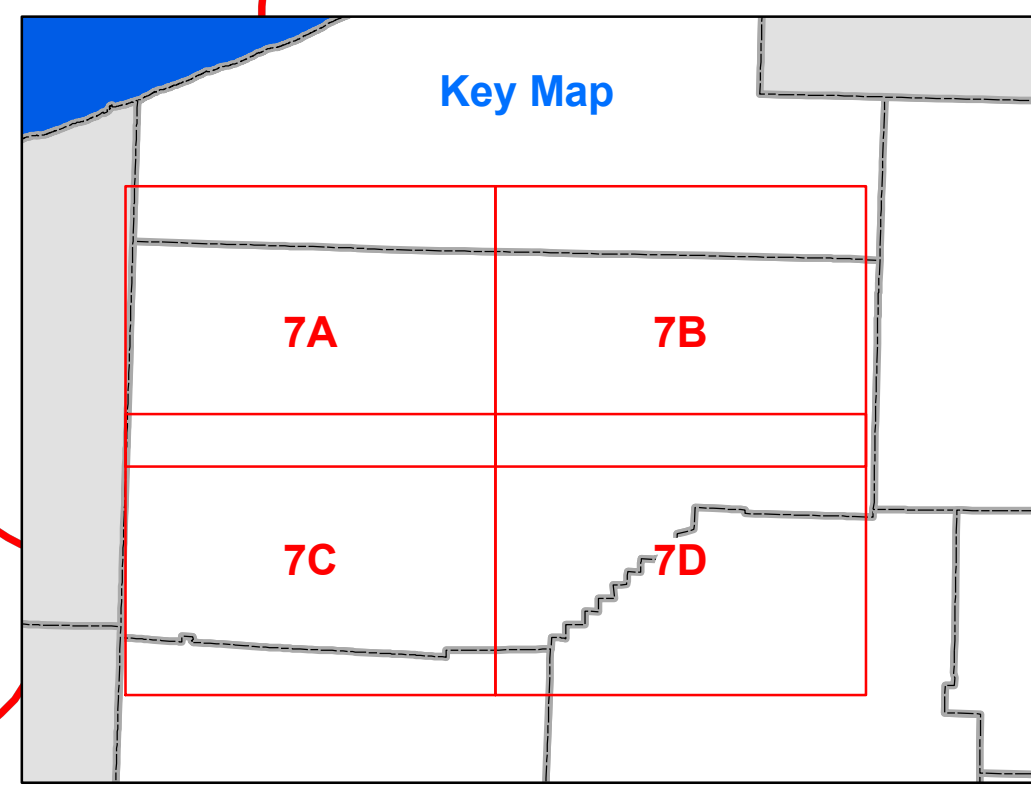
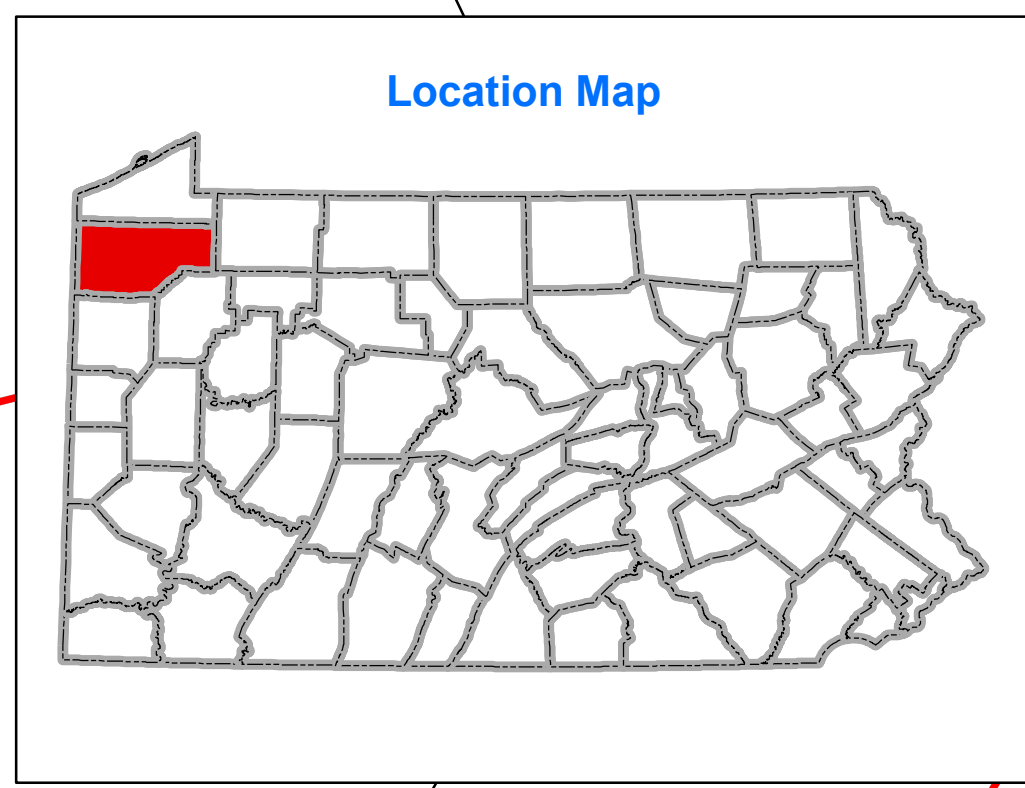


# Plate 7B. Problem Areas Map Countywide Act 167 Crawford County, Pennsylvania



- Problem Areas
- Stormwater Management Facilities
- Major Streams
- Minor Streams
- Water Bodies
- Limited Access
- Highway
- Major Road
- Local Road
- Municipal Boundaries
- County Boundaries
- Act 167 Watersheds
- Detailed Watershed Study
  - Conneaut Outlet (1993 Act 167)
  - French Creek
  - Oil Creek
- General Watershed Study
  - Ashtabula River
  - Brokenstraw Creek
  - Conneaut Creek
  - Cussewago Creek
  - Little Shenango River
  - Muddy Creek
  - Sandy Creek
  - Shenango River
  - Sugar Creek

NOTE:  
Portions of this map that are provided for spatial reference only. They were generated from existing sources and may contain discrepancies that have not been corrected as part of this ACT 167 Plan.

DATA SOURCES:  
Local Roads - PennDOT  
Streams and Waterbodies - USGS NHD  
Municipalities - PennDOT  
Pennsylvania Counties - PennDOT  
Ohio Counties - Ohio GIS  
New York Counties - New York GIS  
Major Highways - ESRI  
Problem Areas - Crawford County  
Stormwater Management Facilities - Crawford County

